

Cell Phone Monitoring and Capturing System



Model: TS801

The Cell Phone Monitoring and Capturing System, TS801, is an intelligent cell phone information collection and capturing system, can provide an all-in-one solution to the police department or the security department. By use of this system, the police or the security can realtime collect the info of the cell phones which appear in the specific areas or pass through some specific gates, not relying on the service providers of cell phones

Features

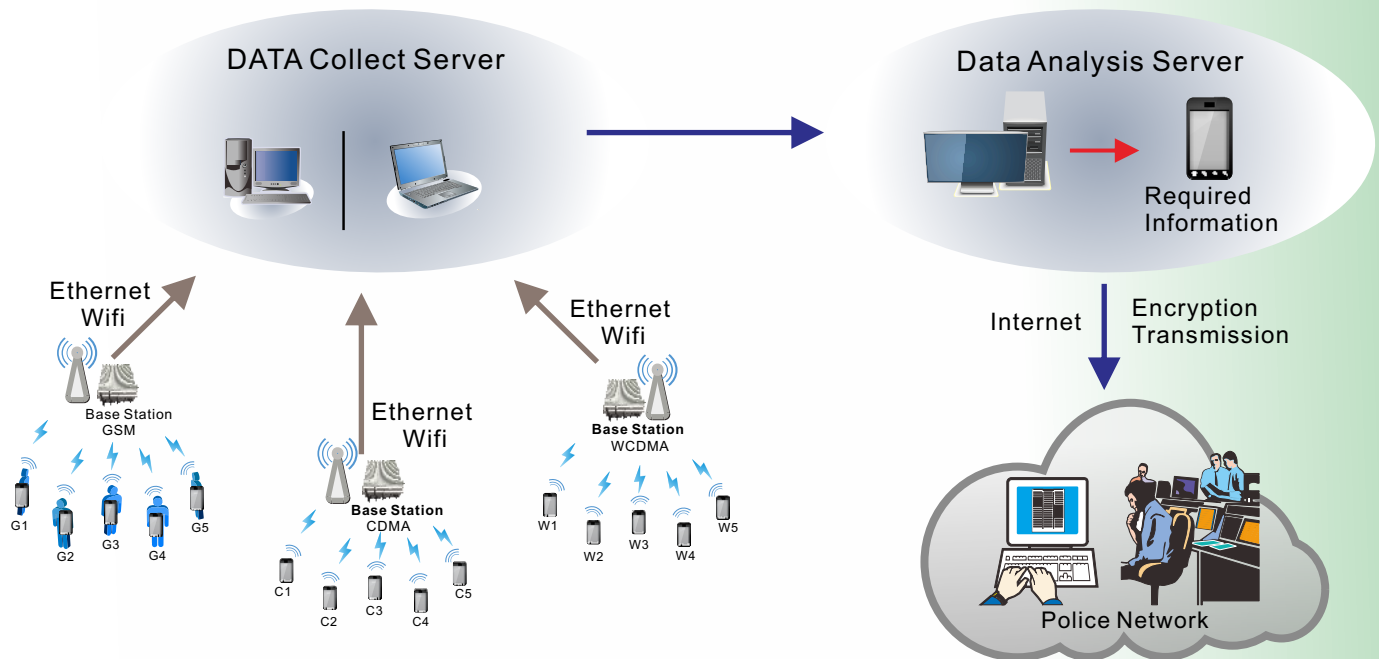
- Collect the IMSI and IMEI info of cell phones which appear in the area. The police and security can identify, or track, or locate a specific person or suspect by use of the IMSI and IMEI info on his cell phone. IMSI, or International mobile Subscriber Identity is used to identify the user of a cellular network and is a unique identification associated with all cellular networks. IMSI, provided by the service provider, is put to and unique to the SIM card in the cell phone, and is unique to and binding to the phone number of the cell phone's owner. IMEI, or The International Mobile Station Equipment Identity is a number, usually unique, to identify GSM, WCDMA, CDMA or LTE mobile phones, IMEI is burned into the cell phone-set by the factory.
- Support multiple scheme cell phones, such as GSM、WCDMA、CDMA2000.
- Regardless of service providers, support all the standard cell phones by different mobile phone service providers, domestic or international.
- Snooping and collecting the cell info automatically and secretly, no need to interrupt, or inform any cell phone owners.
- Snooping and collecting the Short Message Service (SMS) Messages sent by some specific persons or suspects.
- The transmission power and coverage area can be adjustable.
- Can be easily deployed in highway toll gates, main roads or lines, bars, air ports, bus stations, ATMs, KTV, night clubs.

Advantages

- Work automatically after power-on, no need to manually operate.
- Adjust the radio-frequency channel number automatically and intelligently.
- Transmit the collected info to the servers, on high speed, through wire or wireless network.
- The transmission power can be adjustable, which can control the coverage area and distance.
- The software features and interfaces can be customized.
- Support different application scenarios, such as outdoors application, like bars, KTVs, banks, highway toll gates, bus stations, air ports, or indoor applications, like office buildings, prisons.
- Support hand-held or car-carry.



Cell Phone Monitoring and Capturing System



System block diagram

The system has 3 components:

1. Front-End Base station
 - (a) Different models, support GSM\CDMA\WCDMA.
 - (b) Fixed or mobile.
 - (c) Connected to data collection servers via fiber or copper Ethernet, or wlan, or 3G network card.
 - (d) Support OAM interfaces, the parameters can be configurable.
2. Data collection Server
 - (a) Collect the IMSI and IMEI info from front base stations
 - (b) Transmit the cell phone info to data analysis servers
3. Data Analysis and Transmission Server
 - (a) Analyze the IMSI and IMEI info, get the info such as ,which service provider issue this IMSI and SIM card, where this IMSI belong, what model the cell phone is. What time this cell phone appear in this spot, how many times this cell phone enter this area within a day? Etc.
 - (b) Send the info in the required format to the servers by the police department and the security office.
 - (c) Info Encryption for secure transmission.

Specifications

Standards :

- Compliant to 3GPP and GSM standards

RF frequency band (can be customized) :

- GSM 900Mhz
- GSM 1800Mhz
- WCDMA 2010~2025Mhz ; 1880-1920Mhz

Output Power :

- Maximum: 40dBm
- Adjustable, the step is 1dBm.

Power Supply :

- AV110V~240V

Interface :

- 1*10/100M ethernet
- 1*AV plug-in
- 2 Antenna