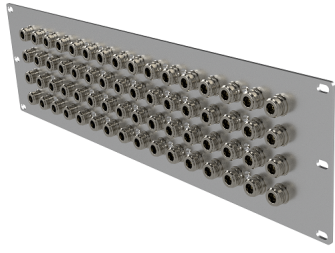


## JTD-64NPP3U



JTD-64NPP3U



3U, N-FEMALE TO N-FEMALE, 64X, DC-6000 MHz

??: ????  
*On Order*  
\*\*\*\*\*

[????????](#)

??

| ??????

| ???????

| ?? 19" ????

| ?? RoHS ??

| ?????????

| ????????????

| ???????

| ???????

FREQUENCY (MHz): DC - 6000

IMPEDANCE: 50 ?

INSERTION LOSS (dB): ? 0.1 VSWR

DC-3000 MHz ? 1.05:1 3000-6000 MHz ? 1.10:1

| LOW INSERTION LOSS

| EXCELLENT VSWR

| STD 19" RACK INSTALLATION

- | RoHS COMPLIANT
- | REDUCE PRODUCTION TEST TIME
- | EFFICIENT CABLE AND COMPONENT MANAGEMENT
- | PLAN FOR FUTURE EXPANSION
- | CUSTOM CONFIGURATION OPTIONS