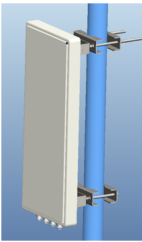


JTD-4857-15D65XPB-2



JTD-4857-15D65XPB-2

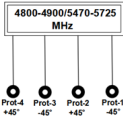


4800-4900/5470-5725MHz Four Ports Panel Antenna

??: ????
7 Days

????????

??



Frequency Range	4800-4900/5470-5725MHz
Gain(dBi)	14/15±1dBi
VSWR	≤1.8
Polarization	±45 °
Horizontal -3dB Beam width(0°)	60±10°60±8°
Vertical -3dB Beam width(0°)	10±2°/10±3°
Front-to-back Ratio(dB)	≥25dB
Isolation(dB)	≥23/≥25dB
Input Impedance (Ω)	50Ω
Maximum Input power(W)	100W
Input Connector Type	4*N-Female(4800-4900/5470-5725MHz)
Lightning Protection	DC Ground