

4800-4900/5470-5725MHz Four Ports Panel Antenna



JTD-4857-15D65XPB-2

JIETONG DIGITAL

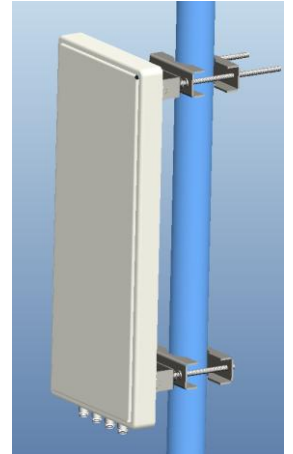
GET CONNECTED

Technical Parameters For Antenna Are Shown In The Following Table

Product Model: JTD-4857-15D65XPB-2

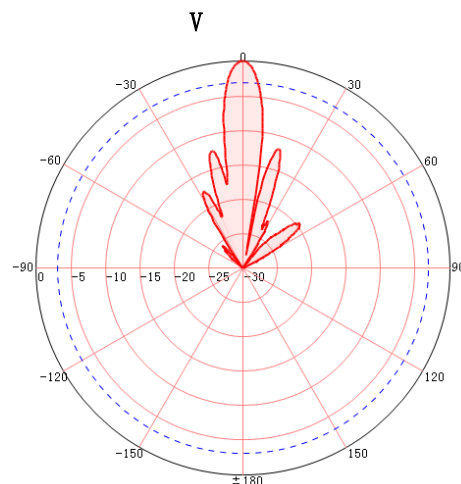
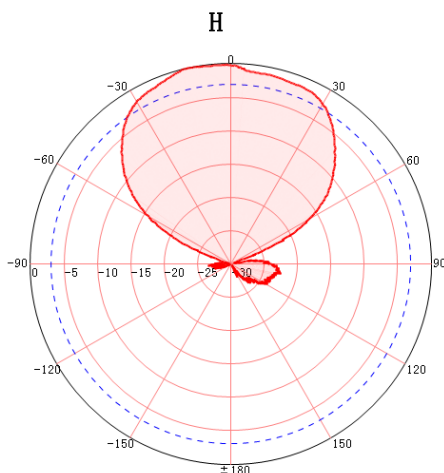
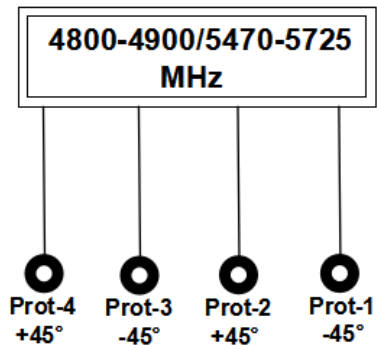
Electrical Characteristic

Frequency Range	4800-4900/5470-5725MHz
Gain(dBi)	14/15±1dBi
VSWR	≤1.8
Polarization	±45°
Horizontal-3dB Beam width(0°)	60±10°/60±8°
Vertical -3dB Beam width(0°)	10±2°/10±3°
Front-to-back Ratio(dB)	≥25dB
Isolation(dB)	≥23/≥25dB
Input Impedance (Ω)	50Ω
Maximum Input power(W)	100W
Input Connector Type	4*N-Female(4800-4900/5470-5725MHz)
Lightning Protection	DC Ground

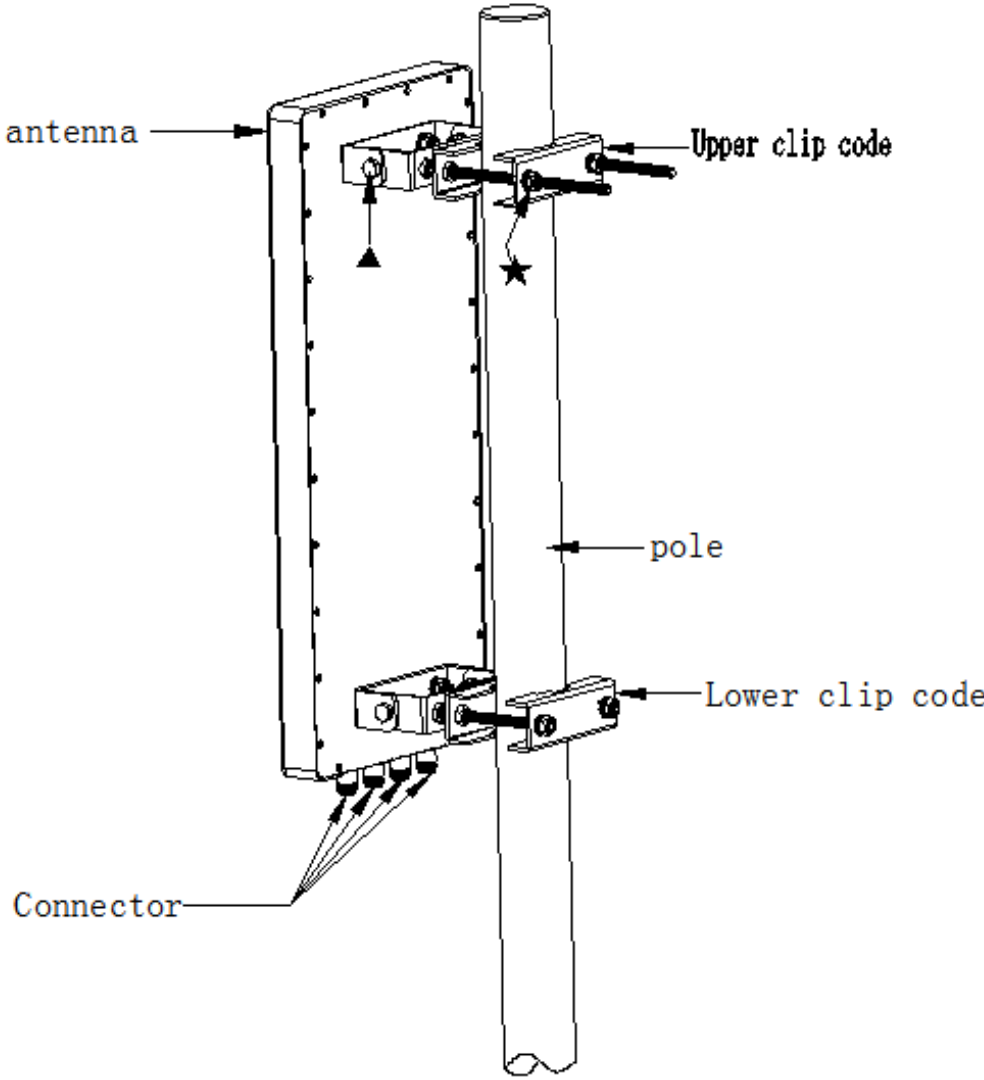


Mechanical Specifications

Dimensions(Height/Width/Depth)	550*230*40mm
Packing Size(mm)	280*85*680mm
Antenna Weight(kg)	2.5±0.1Kg
Rated Wind Velocity (m/s)	42m/s
Operational Humidity(%)	10- 95
Radome Color	white
Radome Material	ABS
Operating temperature(°C)	-40~65°
Ingression Protection	IP55
Installation Method	Hoist mount
Mounting Hardware(mm)	φ 30~ φ 75
Mechanical Tilt(°)	0-10°



Antenna Installation Instructions

<p>Antenna installation diagram</p>	
<p>explain</p>	<ol style="list-style-type: none"> 1. Take out the antenna and accessories, and prepare tools (spanners) 2. Install the antenna clip screw and serrated clip accessories on the $\varnothing 30 \sim 75\text{mm}$ holding pole, adjust the height of antenna installation, and then tighten the nuts on the upper and lower clip screw 3. If it is necessary to adjust the inclination angle of antenna installation, first loosen the screw indicated ▲ in the figure, and adjust the position of the nut indicated ★ in the figure on the upper clip screw according to the angle, and then tighten all the fastening nuts after determining the angle; 4. Connect the corresponding feeder to the cable connector of the antenna according to the polarization label at the antenna connector, and wrap it with waterproof glue to complete the installation.
<p>Notice</p>	<ol style="list-style-type: none"> 1: The antenna must be installed by professional personnel; 2: Antenna erection height can be based on the actual installation environment. There are no tall buildings or large metal bodies nearby, No shielding etc.